



2023



OPEN AIR PROGRAM

Discover art, Montana, and yourself
this summer with Open AIR.

Missoula
Polson
Hamilton
Philipsburg

OPENAIRMT.ORG

ARTWORK BY HAMILTON ARTIST-IN-RESIDENCE BETH GODLY

**OUR WORK IS MADE POSSIBLE
IN PART THANKS TO GENEROUS
SUPPORT FROM...**



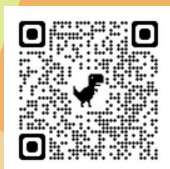
*LAURA BARRETT LIVING ART
FAMILY FOUNDATION FUND*

PATT AND TERRY PAYNE

THE LLEWELLYN FOUNDATION

AND BY INDIVIDUALS LIKE YOU

**SHOW YOUR SUPPORT FOR
CREATIVITY, COMMUNITY, &
COLLABORATION**



openairmt.org/support

ABOUT OPEN AIR

Open AIR is a nonprofit in Missoula, MT. We serve urban and rural areas of Montana and work collaboratively with dozens of partners to weave artists into our communities.

Since 2019, we have placed over 100 diverse artists from around the country at places rich in environmental, historical, or cultural significance through our Artist-in-Residence program.

Join us year-round for inspired programming that includes free activities, such as artist presentations, artist-led workshops for the community, and exhibitions.

2022 HIGHLIGHTS



Angela Cieslewitz, Selway Bitterroot Wilderness



Hannah Harvey, Missoula Library



Grace Brogan, Moon Randolph Homestead



Rachael Marjamaa, Philipsburg, MT

2023 PARTNERS

MISSOULA

- Garden City Harvest
- Home ReSource
- Missoula Butterfly House & Insectarium
- Missoula Public Library
- Montana Natural History Center
- Moon Randolph Homestead

AND BEYOND

- American Prairie
- Flathead Lake Biological Station
- Hamilton, Explore the Arts, MT
- Philipsburg, Arts Fund, MT
- Selway Bitterroot Frank Church Foundation
- Travelers' Rest State Park



**FLATHEAD LAKE
BIO STATION**
UNIVERSITY OF MONTANA



**GARDEN CITY
HARVEST**



**Montana
Natural
History
Center**



Home ReSource
A Community Sustainability Center

**PHILIPSBURG
ARTS FUND**



INDIGENOUS INITIATIVES



REGISTER TODAY

INDIGENOUS ART, INDIGENOUS MINDS

Online Speaker and
Discussion Series



Stella Nall, Visual Artist

Watch all of our
presentations online at
youtube.com/@openairmt

**SECOND TUESDAY
EACH MONTH. 12-1 PM**

JUNE 8

Open Discussion

JULY 13

Buck Hits With A Stick

AUG 10

Committee Meeting

SEPT 14

Monica Gilles-BringsYellow

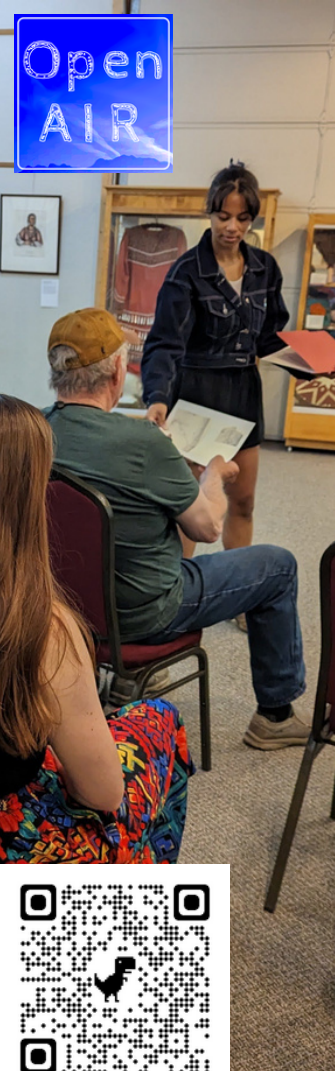
OCT 13

Open Discussion

NOV 9

Shadow Devereaux

Open
AIR



youtube.com/@openairmt



WATCH ARTIST PRESENTATIONS ON OUR YOUTUBE CHANNEL!

Including recent Spring
alumni (left to right) Ryn
Stafford, Sage Friss, and
Aspen & Cameron Decker.



MEET THE SUMMER 2023 ARTISTS-IN-RESIDENCE

MICHELLE BOULE

@ Moon-Randolph Homestead

Boule is a dance artist exploring the intersection of healing practices with art, to create aesthetically enlivened experiences that remind us of the potential of what and who we are.

JUSTINE LAI

@ Missoula Public Library

Based in Flushing, NY, Lai's work focuses on Asian American identity and the roles of technology and labor in the history of cinema and animation.

BT LIVERMORE

@ Home ReSource

BT is a sculptor and sign-maker whose practice includes hand-lettering, assemblage, collaboration, and social commentary. BT Lives and works in Butte, MT.

SHELBY BALDRIDGE

@ Garden City Harvest

Baldrige is an interdisciplinary visual artist based in Missoula, MT. She is interested in themes of interconnection, biological evolution, and the binary between animate and inanimate matter.

BETH GODLEY

@ Hamilton, MT - Explore the Arts

Based in Brooklyn, NY, Beth explores women's lives, abstraction, and the environment through collage & craft. She is inspired by ideas, coffee, bright skies, and recycling.

KERRI ROSENSTEIN

@ Moon-Randolph Homestead

Based in Missoula, MT, Rosenstein is an interdisciplinary visual artist and collaborates with various communities as an educator, facilitator, creative director, and wilderness guide.

BROOKLYN DRAPER

@ Flathead Lake Biological Station

Based in Missoula, MT, Brooklyn is a dancer and choreographer whose physical creativity is highly dependent on people and place. "When we move together, we learn about each other."

JOSEPH RUNNING CRANE

@ Selway-Bitterroot Wilderness

Songwriter & musician from Browning, MT. Joseph's music is influenced by his upbringing in the Amskapii Piikuni traditional homelands his music explores complex themes with humor and levity.

CHRISTINE MARTIN

@ Philipsburg, MT

Christine is a printmaker and painter based in Butte, MT. She uses surrealist imagery to explore the consequences of unfettered industry on the breakdown of local ecosystems.





**FREE & OPEN TO
THE PUBLIC!**

JUSTINE LAI, ANIMATION

Thur June 15

4 pm

@ Missoula Public Library
Missoula



BT LIVERMORE, SCULPTURE

Tues June 20

4 pm

@ Home ReSource, Missoula

SHELBY BALDRIDGE
INTERDISCIPLINARY

Thur June 22

4 pm

@ Garden City Harvest
Missoula



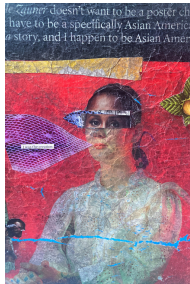
MICHELLE BOULE, DANCE

Tue June 27

5 pm

@ Moon-Randolph Homestead
1515 Spurlock Rd, Missoula

- Presentations are followed by an opportunity to meet the artists & enjoy light refreshments
- For accessibility support email info@openairmt.org



BETH GODLEY, MIXED-MEDIA

Tue Aug 1

5 pm

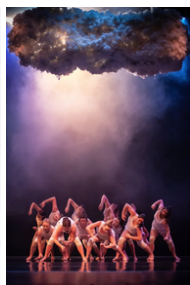
@ Explore the Arts,
Hamilton

KERRI ROSENSTEIN
INTERDISCIPLINARY

Thur Aug 3

6 pm

@ Moon-Randolph Homestead,
1515 Spurlock Rd, Missoula



BROOKLYN DRAPER, DANCE

Fri Aug 4

12-5 pm

@ Flathead Lake Bio Station
Open House, Polson

JOSEPH RUNNING CRANE
MUSICIAN

Tues Aug 8

4 pm

@ Native Plant Garden,
Fort Missoula



CHRISTINE MARTIN
PRINTMAKER

Thur Aug 10, 4 pm

@ Winninghoff Park,
Philipsburg

OPENAIRMT.ORG/EVENTS

SUMMER WORKSHOPS

REGISTER TODAY!

Workshops are free. Donations appreciated. Registration required.
For accessibility support email Kelli at program@openairmt.org.

REGISTER AT:
[OPENAIRMT.ORG/EVENTS](https://openairmt.org/events)



JUNE 7

Direct Animation

w/ Justine Lai

Missoula Public Library 5-8 pm

Explore experimental
animation made "directly"
onto movie film.



JULY 25

Art Mobiles

w/ Beth Godley

Explore the Arts, Hamilton

9-Noon

Make a well-balanced kinetic mobile with
your choice of wire and materials.

JULY 19, 26 & AUG 2

Intro to Printmaking-

w/ Christine Martin

Philipsburg, MT

Learn about the fundamentals of mono-type, letterpress
and relief printmaking. Not required to attend each class.





Join our Zoom conversation at noon
on October 16, openairmt.org/events



Melissa Kwasny, Writer



Delia Touche, Visual Artist



Brandon Reintjes, Visual Artist

**AMERICAN
PRAIRIE**

**Open
AIR**

**This Fall, we are proud to
welcome three artists to
American Prairie for our first
year of collaboration.**

**SPECIAL THANKS TO SUPPORT FROM
THE LAURA BARRETT LIVING ART
FAMILY FOUNDATION**



Thank you for your support:

INSPIRED SPONSORS



SIEFERT & WAGNER, PLLC

Anonymous



First Security Bank

DIVISION OF GLACIER BANK

CRAFTER SPONSORS



Morgenroth Music Centers

Life is short, don't forget to play | 800-462-0013
1105 W Sussex, Missoula, MT 59801 (No Sales Tax)

SEASONAL SPONSORS

TRADEWORKS
CONSTRUCTION

pangea
bar & restaurant



SAVE THE DATE

OCT 13, 2023

A DAY OF ART & SCIENCE

*Join us at the University of Montana
Flathead Lake Biological Station (FLBS)
for a day of art and science activities,
presentations, and experiences led by
artists, scientists, and educators!*



Artist-led activities will be provided by
FLBS Open AIR Artists-in-Residence.
Below, left to right: artwork by
Jasmine Gutbrod, Sarah Jones,
Nicole Banowetz & Charlie Dov Schön

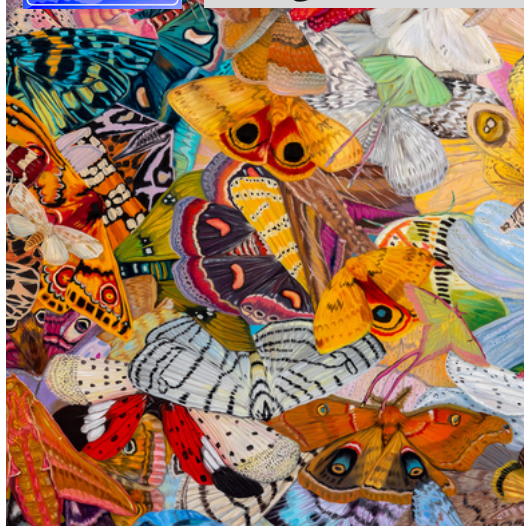


**FLATHEAD LAKE
BIO STATION**
UNIVERSITY OF MONTANA



OPENAIRMT.ORG/EVENTS

FALL RESIDENCY SITE HIGHLIGHT!



Meet Lauren Bolini, Open AIR Artist-in-Residence at the Missoula Butterfly House & Insectarium this Fall, 2023!

IT TAKES A VILLAGE

Open AIR Board of Directors

Addie Palin, Board President

Carl John McKay, Board Treasurer

Sally Jo Beck, Board Secretary

Amy Sings In The Timber,

Indigenous Initiatives Chair

Carrie Richer, Artist Representative

Liz Dye

Anne McNallen

Sami Stanley

Katie Van Dorn

Janel Woodworth

Open AIR Support Team!

Stoney Samsoe - Executive Director

Kelli Sinner - Program Coordinator

Kaisha Gerhardt - Media Intern

Erika Fredickson - Executive Support

Sasha Bell - Event Coordinator

Dawn Payne - Bookkeeper

CONTACT

info@openairmt.org

openairmt.org

PO Box 8643

Missoula, MT 59807



Blackfoot
Communications®

Supporting
creativity and
community in
Philipsburg
and beyond,
through
Open AIR!



In partnership with the

**PHILIPSBURG
ARTS FUND**

THANKS TO OUR 2023 LUMINARY SPONSORS



BARE BAIT DANCE
& WESTSIDE THEATER





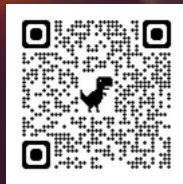
SAVE THE DATE - NOV 3, 2023

GLOW

**Annual Fundraiser & Art Auction
at the Missoula Public Library**

**CELEBRATING 5 YEARS OF CREATIVITY,
COLLABORATION, AND COMMUNITY**

Live & Silent Art Auction | Music | Tapas & Cash Bar



**Tickets and info at:
openairmt.org/glow**